


# EXCEPT

GREEN TRANSFORMATIONS

COOL, LIVABLE &  
FUTURE-PROOF CITIES





An architectural rendering of a sustainable urban development. The scene features modern, multi-story buildings with large glass windows and balconies, some of which have greenery on them. A winding path leads through a lush garden with various plants, trees, and a small water feature. In the foreground, a man is sitting on a bench, and a group of people is walking along the path. The sky is blue with some clouds. The overall atmosphere is one of a vibrant, green, and community-oriented living space.

***"Inner cities increasingly feel the pressure from the urban heat island effect, air pollution, and water management."***

***Green transformations regenerate problem areas into future-proof, flourishing and community-oriented living places.***



## LOST PLACES

**Everyone knows them: places that feel unsafe, are paved over, and become unbearably hot on warm days.**

**Spaces you only pass through quickly, places you'd rather avoid.**

IMAGE: TILBURG FROM ATLAS NATUURLIJK KAPITAAL



## URBAN CHALLENGE

**Cities face complex challenges in making the living environment future-proof. These include:**



### CLIMATE ADAPTATION & URBAN ECOLOGY

- › Managing stormwater and sewer capacity
- › Declining biodiversity
- › Heat stress
- › Irrigation during drought
- › Air pollution



### MAINTENANCE & INFRASTRUCTURE

- › Green space maintenance
- › Underground infrastructure
- › Soil improvement
- › Handling peak loads in electricity, water, and gas
- › Archaeological research



### SOCIAL & SOCIETAL

- › Engaging stakeholders
- › Changing mobility & parking
- › Historic sites
- › Vandalism and litter
- › Health and happiness of residents and visitors





*Bastion, Goes*



*Stadstuin van Hasselt*



*Zusterstraat, Goes*



*Salesforce Park, San Fransisco*





BEFORE

AFTER

**Stadstuin van Hasselt**  
Parking lot transformation

## WHAT GREEN TRANSFORMATIONS DO

We create livable, future-proof cities by improving green and blue structures. Green Transformations are the solution to heat stress. They also promote biodiversity, adapt to climate change, and absorb CO<sub>2</sub> and fine dust.

By deploying ecosystem services and biobased solutions, such as smart plant combinations and manageable greenery, we create habitats for insects, microbes, and other organisms (including people).

Above all, Green Transformations contribute to the happiness and health of residents. They increase city appeal and property values while supporting effective water management.



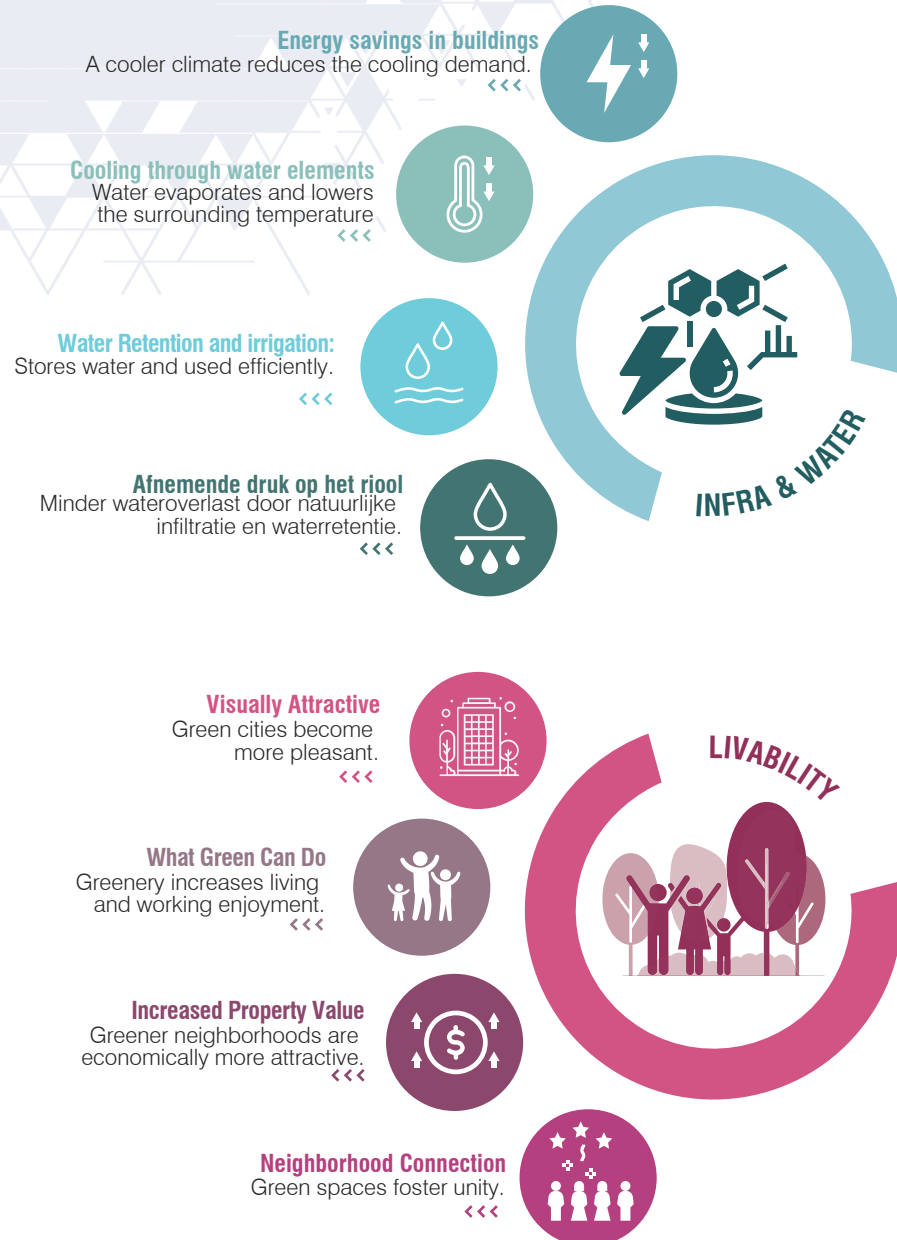
BEFORE

AFTER

**Salesforce Park, San Francisco**  
Bus station transformation



# THE BENEFITS OF GREEN TRANSFORMATIONS





## GREENER, MORE RESILIENT AND LIVABLE

Except developed a streamlined service with over 20 cities to transform urban areas into green gems. It delivers initial analysis to community involvement, impact analysis, concept development and an implementation plan. All that for an affordable price that allows any community or organization to start transforming their environments today.

*"Greening is the solution for livable and attractive cities: they not only cool and support health but also strengthen nature and biodiversity while protecting us from climate change. A public value opportunity we cannot ignore."*

- Tom Bosschaert



Except offers two strategies for green transformations, which can work independently or in combination:

- 1 STRATEGIC MAP** OF OPPORTUNITY LOCATIONS
- 2 CONCEPT DESIGN** TRANSFORM A LOCATION





**WITH NATURE-BASED INNOVATIONS, WE  
CREATE THE CITY OF THE FUTURE.**

**1**

## STRATEGY MAP

### OF OPPORTUNITY LOCATIONS

**Duration: 6 weeks**

In this short strategic phase, we analyze the city or district as a whole, and pinpoint the most effective locations for a green transformation.

#### APPROACH:

##### 1. Analysis & Preparation

*Documentation and future plans are collected and studied.*

##### 2. Site Visit

*A meeting with relevant officials and a site visit.*

##### 3. Sketch Strategy Map

*An initial sketch is made, and interactive co-creation is facilitated.*

##### 4. Feedback Session

*A feedback round takes place in an online meeting to refine the plan.*

##### 5. Strategy Map & Action Plan

*The map, action plan, and timeline are developed.*

##### 6. Presentation & Follow-up Steps

*The results will be presented, and follow-up opportunities will be discussed.*



# 2

## CONCEPT DESIGN

### TRANSFORMING AN OPPORTUNITY LOCATION

**Duration: 5 months**

In this process, we transform a specific opportunity location into a green and attractive area. Co-creation is central to the process, involving direct stakeholders for a widely supported and sustainable plan. The outcome is a supported concept design with cost estimation and impact evaluation, and guidance on implementation.

#### AANPAK:

#### 1. Analysis & Site Visit

Information, documentation, and city plans are collected and validated. A meeting with relevant officials and site research will then take place.

#### 2. Information Session

An interactive session with stakeholders, including residents, entrepreneurs, and other involved parties.

#### 3. Design and Presentation of Plan Scenarios

Input from the session is integrated into the initial design explorations of the plan in two design directions.

#### 4. Co-Creation Session

The plan scenarios are discussed, after which a desired design direction is developed collaboratively.

#### 5. Design Iteration to Full Concept

The design direction is further elaborated, with an in-depth exploration of the details of greening and cooling interventions.

#### 6. Presentation, Impact Calculation & Delivery

The concept design is presented to the stakeholders. Final adjustments are made, after which the plan is recalculated and officially delivered.

--> The concept plan is now ready for technical development.

**EXECUTION  
GUIDANCE**

**ALIGNMENT  
TECHNICAL DESIGN**

**CO-CREATION**

**PLANNING**

**SKETCH  
DESIGN**

**TRANSFORMATION INTO AN IMPACTFUL  
PLAN DEVELOPED IN CO-CREATION**



## ABOUT EXCEPT

**Except is a social enterprise that develops innovative concepts and strategies for a resilient, just, and regenerative built environment, organizations, and industries.**

Since 1999, we have worked passionately on forward-thinking yet practical projects. In every trajectory, we collaborate with public and private partners in co-creation to push the boundaries of sustainability.



## PARTNERS



**DE  
GROENE  
STAD**



Our headquarters is located in our self-developed sustainable center, [Utrecht Community for pioneers \(UCo\)](#), a sustainably redeveloped historic train depot.

How can we help your organization become more sustainable?

View our 25 years of work or contact us at:  
[www.except.eco](http://www.except.eco).



# EXCEPT

INTEGRATED SUSTAINABILITY

[www.except.eco](http://www.except.eco)  
[info@except.eco](mailto:info@except.eco)

2e Daalsedijk 6A  
3551 EJ Utrecht  
The Netherlands

